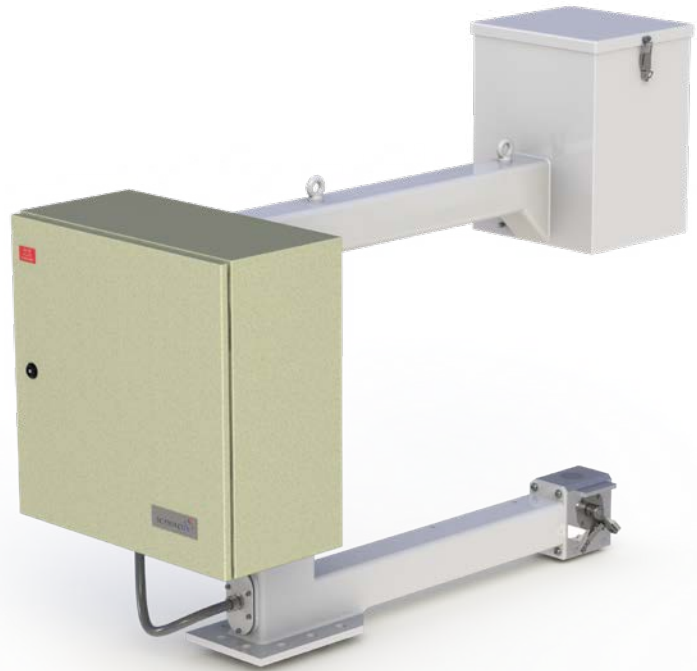


ON-BELT ASH ANALYSER FOR ALTERNATIVE FUELS



BALZSCAN 2100 Applications

Real-time Alternative Fuel quality data allows active process control, with timely information on ash and Calorific Value (with moisture module) to make decisions that maximise the value of the resource, optimise product quality and minimise operating costs.

The proven technology in the BALZSCAN 2100 system has been used for many years in the very successful and reliable COALSCAN 2100 systems. The same principles apply to alternative fuels where instantaneous information on quality is critical for effective quality management.

Low belt loads typical of Alternative Fuels may not be an issue for this very sensitive measurement technology.

BALZSCAN 2100 Advantages

- Low investment and maintenance costs;
- Simple installation;
- No contact with the material or the conveyor belt;
- Simple calibration;
- No sampling necessary during normal operation;
- Standard plant interfaces, including RS422 and Ethernet;
- IP65 (NEMA4) protection to suit typical plant conditions;
- Optional SUPERSCAN display software;
- Local technical support;
- Support via remote connection.

BALZSCAN 2100 Description

The BALZSCAN 2100 is a single enclosure designed to be installed directly on production conveyor belts. The analyser uses a dual gamma ray beam which passes through the entire bed of material. The ratio of the two count rates from gamma ray beams is proportional to the ash content, independent of bed depth. This technology provides the most rapid measure of variations in materials such as Alternative Fuels quality. The standard analyser can be customised to suit plant requirements.

Options include:

- TBM Moisture Kit;
- Stainless steel electronics cabinet;
- SUPERSCAN display and reporting system;
- Customised plant interfaces;
- Customised frames for wider belts and higher tonnage applications.



SCANTECH
Process control specialists

Scantech's Analysers

Scantech provides the recycling, energy, mining, coal, steel and cement sectors with analysers for a wide range of applications and environments. Scantech can deliver online solutions that suit your process, reduce your operating costs and minimise Health, Safety and Environmental risks for your operations. Whether you need to monitor moisture, ash, sulphur, mineral or energy content we have the right application for your needs and budget. Real time analysis during the various phases of production provides operators with significant opportunities for plant optimisation and quality control. Over the past three decades, Scantech analysers have become a standard process control tool in the resources and recycling sectors. Scantech analysers are a fundamental component of companies' digital technology strategies utilising real time measurement systems to enable core processes to become fully integrated, autonomous, remote and automated.

Scantech Products have
Patented Technology &
Registered Trademarks

ADELAIDE OFFICE

PO Box 64 Unley
South Australia 5061
AUSTRALIA
Tel: +61 8 8350 0200
Fax: +61 8 8350 0188

BRISBANE OFFICE

PO Box 1485 Springwood
Queensland 4127
AUSTRALIA

Scantech Products

- GEOSCAN GOLD Premium On-belt Elemental Analyser for Minerals
- GEOSCAN-M On-belt Elemental Analyser for Minerals
- IRONSCAN 1500 On-belt Natural Gamma Iron Ore Analyser
- MINERALSCAN 1500 On-belt Natural Gamma Minerals Analyser
- MINERALSCAN 2100 On-belt Density Analyser
- CM 200 On-belt Conductive Material Moisture Analyser
- GEOSCAN-R On-belt Elemental Analyser for Recycling
- TBM 280 Through Bale Moisture Monitor
- CM 200-R On-belt Conductive Material Moisture Analyser for Recycling
- BALZSCAN 9500X On-belt Elemental Analyser for Alternative Fuels
- BALZSCAN 2100 On-belt Ash Analyser for Alternative Fuels
- TBM 280 BaleScan Through Bale Moisture Monitor for Alternative Fuels
- GEOSCAN-C On-belt Elemental Analyser for Cement
- BLENDSCAN Process Control for the Cement Industry
- TBM 260 ReadMoist Through Bin Moisture Analyser for Concrete
- GEOSCAN-S On-belt Elemental Analyser for Steel
- CM 200-S On-belt Conductive Material Moisture Analyser for Steel
- COALSCAN 9500X On-belt Elemental Analyser for Coal
- COALSCAN 1500 On-belt Natural Gamma Ash Analyser
- COALSCAN 2100 On-belt Ash Analyser
- CIFA 350 Carbon in Fly Ash Analyser
- TBM 210/220/230/240 Through Belt Moisture Analysers
- TBM 260 Through Bin Moisture Analyser
- SIZESCAN Particle Size Distribution Analyser

Specifications

Dimensions & Weight Measurement C Frame

| | |
|--------|------------------|
| Length | 0.60 m (0.86 m*) |
| Width | 1.45 m |
| Height | 1.16m |
| Weight | 150 kg (170 kg*) |

* with TBM Moisture Kit

Specifications subject to
change without notice.